

AR - LC

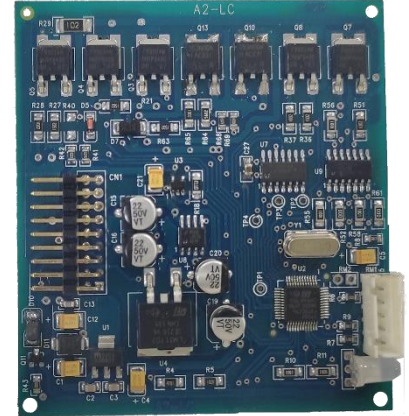
LOOP CARD FOR AARAL

General

The Loop Card is compatible for Aaral X4(4 loop panel) & Aaral X8(8 loop panel). Up to 250 devices can be connected in a single loop card. Loop Card is compatible with addressable detectors (heat, smoke & multi), initiating devices (Pull station, Monitor module, Zone module, etc.), output device (Control, Relay, Sounders & Sounder - Strobe, etc.).

Features

- Loop wise device test .
- Loop card can programmable as Class A, Class B and Class X wiring.
- Maximum 250 devices per loop.
- Auto learning facility.



Specification

Electrical Specification	
<i>Number of Devices per loop</i>	250
<i>Loop resistance</i>	40 ohms (Max.)
<i>Loop capacitance</i>	0.6 μ f (Max.)
<i>Loop Current</i>	350mA (Max.)
<i>Operating Temperature</i>	0 - 49° C / 32-120° F
<i>Relative Humidity</i>	93 \pm 2% RH (non-condensing) at 32 \pm 2° C / 90 \pm 3° F

Compatible Panel

Model	Description
Aaral X4	Analogue Addressable Fire Alarm Control Panel expandable upto 4 loops
Aaral X8	Analogue Addressable Fire Alarm Control Panel expandable upto 8 loops

Ordering Information

Model	Description
AR -LC	Loop Card for Aaral X4 /X8 Panel

India

RAVEL ELECTRONICS PVT LTD.,
150A, Electronics Industrial Estate,
Perungudi, Chennai – 96, India.
E-mail: marketing@ravelfire.com; Web: www.ravelfire.com

USA

RAVEL AMERICAS INC.,
2855 NW 112th Ave ST#2 Miami,
Doral, Florida 33172, USA.